



PLUS VALUE

for your home

AMERICAN-Standard

WILLIAM A. GOSSELIN
270 Pleasant St. Phone 346
Berlin, N. H.

get top quality with **AMERICAN-Standard**

Make it American-Standard throughout your home. For bathrooms, kitchen and heating—you can depend on quality American-Standard products to serve you best.

American-Standard bathroom fixtures are designed for your convenience and comfort, will stay beautiful through the years. Faucets and fittings give trouble-free service.

In addition to the finest kitchen sinks, American-Standard now offers a complete line of cabinets with interchangeable shelves and drawers to make kitchen planning easy.

American-Standard boilers perform economically, efficiently. To provide radiant heating at its best, they combine with modern baseboard heating panels, or with attractive radiators and convectors.

Developed in ultra-modern research laboratories and produced under elaborate inspection and testing systems, American-Standard products are of highest quality. When you build or modernize, you can rely on American-Standard as a single, dependable source for a wide variety of products that make your home one to be proud of.



AMERICAN RADIATOR & STANDARD SANITARY CORPORATION
P. O. BOX 1226, PITTSBURGH 30, PA.

have a new bathroom that stays new-looking
with **AMERICAN-Standard** bathroom fixtures

Your most important consideration in planning your next bathroom is your choice of plumbing fixtures. For millions that choice is American-Standard.

American-Standard fixtures are designed with an eye to beauty as well as utility. "Advance styling," it's called—you get design features that will be as modern tomorrow as they are today.

You'll find American-Standard fixtures retain their beauty, too, even after years of daily use. They are made of genuine vitreous china or enameled cast iron. American-Standard vitreous china, of which toilets and many lavatories are made, has exceptional cleaning and wearing qualities yet is resistant to chipping, cracking or crazing. Cast iron bathtubs and lavatories, too, are built for long service. To the sturdy cast iron is permanently fused a thick, smooth coat of lasting enamel—either regular or acid-resisting.

American-Standard colors are true and permanent. They will not dull or fade. However, china color samples and color fixtures appear differently under various lighting conditions. Selection should be made under the exact lighting conditions to be used or the closest approximation possible.

T'ang Red is available in vitreous china fixtures only. All American-Standard fixtures also come in white.



Ming Green



Corallin



Ivoire de Medici



Clair de Lune Blue



T'ang Red



Persian Brown



make your bathroom
look like this with the
most beautiful bathroom
fixtures ever made

MASTER PEMBROKE BATH

Low sides (16 inches high) and smooth, flat bottom add up to safe, comfortable bathing. Recess model has convenient rim seat for use while dressing. Both models are enameled cast iron with left or right hand outlet. Your choice of 4½, 5, 5½ foot lengths. P 2212 QR



American-Standard bathtubs are the finest. They are all made of rugged cast iron, with a smooth coating of enamel fused to the metal. Cast iron forms a rigid base for enamel, so chances of chipping are reduced. The enamel is extra-thick — it stays lustrous and easy to clean through countless scrubbing. Choose an American-Standard *cast iron* bathtub, and be sure of good service for years and years to come.

NEW COMPACT TOILET

This deluxe unit combines modern styling with trouble-free operation. Siphon-jet flush action rinses thoroughly with unusual quietness. Made of non-absorbent vitreous china with round bowl, or elongated bowl as shown. F 2050 A



NEW COMPANION LAVATORY

Wide shelf back, roomy bowl, large soap dishes, front overflow, make this lavatory a bathroom favorite. Notice that trim lines on lavatory, bath and toilet create matching design. Made of genuine vitreous china in two sizes 22 x 18", 26 x 22". Legs and towel bars optional in smaller size. F 102 AT



NEW COMRADE LAVATORY

Here's another popular model with convenient shelf back for toiletries during lavatory use. Bowl tapers to back permitting large soap dishes—giving added room in front where it's needed most. Can be installed with or without legs and towel bars. Two sizes—20 x 18", 24 x 20". F 121 AT



enjoy a really

luxurious bathroom

Neo-Angle bathing suits every family member. Integral corner seats do the trick. Children can be bathed from comfortable sitting position. Adults find seats useful for foot and sponge baths, too.

On-the-angle bathing compartment is roomier than conventional five foot bath, yet the Neo-Angle only requires space about four feet square. And only the Neo-Angle gives you a choice of a sitting or standing shower or rinse.



NEO-ANGLE BATH

Here's the distinctive bath. Twin corner seats serve for foot and sponge baths, sitting showers or bathing baby. Low sides, flat bottom make entering and leaving safe and easy. Rugged cast iron coated with acid-resisting enamel. Available in recess or corner models with outlet on left or right. P 2115 AK



SYMPHONY LAVATORY

This is a truly luxurious lavatory . . . in size, in beauty and in the convenience it brings. It is 36" long, 22" wide. There's spacious deck surface on both sides of roomy bowl for cosmetics and toiletries. Genuine vitreous china. F 90 AT



MASTER ONE-PIECE TOILET

Always first choice for luxurious bathrooms. Smartly styled tank and bowl are one piece of genuine vitreous china which makes it exceptionally easy to clean and keep clean. Quiet siphon vortex flushing action assures sanitation. Round bowl, or elongated as shown. F 2000 A



have a complete extra bathroom

in space as small as 3' x 7'



Closets before . . .

now a bathroom!

Many homes have back-to-back closets. This space is ideal for an extra bathroom. Removing center partition makes a room 48 inches wide. The Restal fits a finished recess only 36 x 38 inches. Notice how lavatory and toilet can be placed to permit entrance from two bedrooms.



RESTAL RECEPTOR BATH

Requires only shower stall space, yet combines the features of both a bathtub and shower. Measures only 38 x 39 inches over-all, 12-inch height adds to ease of bathing children, makes entering and leaving safe and easy. Corner seat is ideal for foot and sponge baths, for seated showers. Enameled cast iron in recess model with left or right outlet. P 2125 AK



LEDGEWOOD LAVATORY

Ideal for pocket-size bathrooms. 4-inch high back reduces chance of splashed walls. 4½-inch wide shelf holds toiletries during lavatory use. Two sizes—22 x 19", 19 x 17" in enameled cast iron. P 4105 AT



NEW CADET TOILET

Much desired in any bathroom because of its smart appearance and its quiet, thorough siphon-jet flush action. Smooth vitreous china surfaces and clean modern lines make cleaning easy. Models for 12" and 14" roughing. F 2112 A



VIKING LAVATORY

Fits out-of-the-way corner space. Sides measure 17 inches, corner to front rim is 20½ inches. Spacious bowl, large soap dishes, handy shelf ledge add big lavatory convenience. Genuine vitreous china. F 385 A



plan for dressing-room convenience (and extra storage) in your bathroom



NEW DRESSLYN

Here's a lavatory, dressing table and storage cabinet all in one compact unit. Handsome wood cabinet reveals special storage drawers, sliding medicine chest and storage space aplenty. Choice of center kneehole or straight front model in gray, blue, peach or white. Four lengths—42, 46, 58, 62 inches. 16-inch width saves floor space. Enameled steel counter top and splash back resists burns and stains. Genuine vitreous china lavatory available 20 x 18", 24 x 18" in white or seven colors. F 127 DA



MERRILYN

Center kneehole cabinet makes comfortable dressing table. Merrilyn cabinet measures 42" long, 19½" deep. Also available in straight front model. Features and color combinations are same as New Dresslyn. Stainless steel mounting frame supports 20 x 18" vitreous china lavatory. F 141 VA



HIGHLYN

Lavatory-dressing table units bring new convenience to bathrooms, powder rooms, even bedrooms. Highlyn cabinet offers same convenience features as New Dresslyn but measures 42" long, 19½" deep. Handsome lavatory is enameled cast iron, 20 x 18", in white or five colors. P 3001 HA



The storage capacity of the compact 42" cabinet is amazing. Drugs and medicines go in sliding medicine chest on left. Lower area is for towels. Soaps, cleaners, tissues find space in center compartment. Three special storage drawers on right hold cosmetics, with more room for towels beneath.

you have the widest choice
of *AMERICAN-Standard* lavatories
to meet your exact needs

Before selecting a lavatory for your next bathroom, it will pay to check various styles and sizes and the advantages each offers. A lavatory that meets your specific needs will give greater convenience and lasting satisfaction.

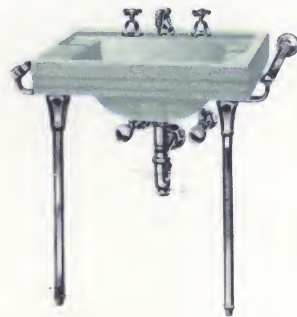
American-Standard offers you the widest choice anywhere. Displayed here and throughout this booklet are some of the most popular American-Standard lavatories.

American-Standard lavatories are made of genuine vitreous china or enameled cast iron. Vitreous china lavatories are available in white and seven lovely American-Standard colors, enameled cast iron in white and all colors except T'ang Red. Fittings and all exposed metal are finished in non-tarnishing, easy-to-clean Chromard.



MARLEDGE

Shelf back 4" wide. Genuine vitreous china. 18 x 14", 20 x 14", 26 x 14". F 305 AT

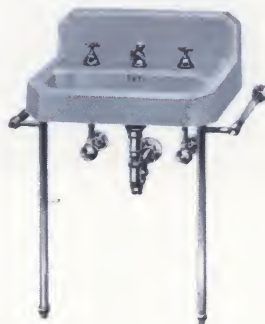


NEW ROXBURY

Smart design, wide ledges. Genuine vitreous china. 20 x 18", 24 x 20", 27 x 22". F 150 AT

HEXAGON

6" high back protects against splashed walls. Enameled cast iron. 20 x 18", 22 x 19". P 3857 AT



NEW BLACKFORD

Wide counter ledges. China pedestal provides support. 20 x 18", 24 x 20", 27 x 22". F 180 A



now is the time to plan an extra bathroom

Nothing quite equals having a modern bathroom—except the wonderful convenience of *two* bathrooms.

A second bathroom gives privacy. It unsnarls bathroom traffic jams. It helps teach children personal cleanliness. It symbolizes hospitality to guests. A second bathroom serves daily in so many ways that it has become essential to a smooth-running household.

Now is the time—before you build or modernize—to plan for a second bathroom in your home. There are all sorts of economical ways you can fit in that extra bathroom. Your architect, builder or plumbing retailer can show you how.

Another way to save money is to choose American-Standard plumbing fixtures for both bathrooms. There's such a wide selection, you're sure to find bathroom groups priced right for you. And more important, American-Standard quality assures the good service and lasting convenience you want.



TRIMLEDGE

Handy shelf back, integral soap dish. Genuine vitreous china. 19 x 17". F 301 AT



DENLAVA DENTAL LAVATORY

This dental lavatory keeps your regular lavatory neater, more sanitary. It speeds up the morning rush. And it's an excellent training aid for children. Flushing rim rinses lavatory at each use. Genuine vitreous china. 16 x 15 $\frac{3}{4}$ ". F 575



LUCERNE

Integral china back protects against splashed walls. Genuine vitreous china. 20 x 18", 24 x 20". F 367 A



insist on quality
AMERICAN-Standard fittings
for good service

The satisfaction you expect from your plumbing fixtures will largely depend on your selection of fittings. American-Standard fixtures and fittings are designed to work together as a team.

American-Standard fittings are precision made for smooth operation—carefully designed to give you the longest possible service. The Re-Nu feature below is one example of the true economy you can experience.

These quality fittings are non-tarnishing Chromard which won't chip or peel. They are easily identified with the marking "Standard" so that replacement parts can easily be obtained at any time. There'll be no need to discard the fitting for lack of a part.

What's more, you can select your American-Standard fittings from a wide variety of attractive designs and styles for any fixture in your home.

three styles to choose from



WALDORF TRIM is designed for truly luxurious settings. It is particularly harmonious with fixtures having angular lines.

COLONIAL TRIM illustrates the beauty of simplicity. Always in the best of taste with period or contemporary decorative schemes.

STANDARD TRIM gives you a design with universal appeal. Standard trim adapts itself to any bathroom setting you desire.



SPRING-FLO AERATOR adds tiny air bubbles to the stream of water from the faucet. Aerated water tastes better, is always clear. It produces suds faster, washes better and rinses faster. Best of all, the aerator prevents splashing. The Spring-Flo aerator is available for most American-Standard lavatories.



SHOWER HEADS (Victor and Boyd) can be adjusted for rain spray or mist. Both are available with or without a volume regulator and with ball joint or rigid connection. At normal pressures Victor head produces stream no wider than tub. B 276 Victor B 266 Boyd.



RE-NU FEATURE adds years of service to American-Standard fittings. Parts subject to wear are housed in a special barrel in the fitting body. When wear occurs, a new barrel—instead of a complete new fitting—can be inexpensively replaced.

save work, save time with an **AMERICAN-Standard**
kitchen



A modern American-Standard kitchen will add value and beauty to your home—and save you time and work besides. That's particularly important when you stop to think how much time a busy woman spends in her kitchen. It's got to be right.

And you can be sure your kitchen will be right when you choose American-Standard.

American-Standard has long been famous for cast iron kitchen sinks—the finest made. Now, the same manufacturing skill and product pride is being built into a complete selection of steel kitchen cabinets.

There's a size and type of sink and of wall, base and undersink cabinets to assure the perfect kitchen for your needs. To match this great variety of cabinets,

American-Standard offers an impressive variety of work-saving cabinet accessories.

In addition, the Aeropel ventilator gets rid of kitchen grease and fumes, while the Disposer ends garbage worries forever.

But that's not all. American-Standard has developed a new concept of kitchen storage called cabinet convertibility. Convertibility means that the position of a wide selection of sliding shelves or drawers in under-sink or base cabinets can be changed easily, by anyone, at any time.

American-Standard is the *only* kitchen which offers you all these quality advantages. Compare—and you'll choose American-Standard.



start your new

An American-Standard sink and cabinet combination will be the heart of your new kitchen. With the widest variety of cast iron and steel sinks in the kitchen industry to choose from, you can be sure of getting the sink that's exactly right for your particular kitchen and your own work habits. To complement the sink, American-Standard undersink cabinets offer advanced styling and quality construction. They are durable cabinets with doors that close silently, positively, and drawers that slide easily at a finger touch. And they have the American-Standard exclusive convertibility feature.

Big and beautiful is the double sink with double drainboards. This sink and undersink cabinet provide a work center that is both luxurious and completely practical. Sizes: 60" and 72" cast iron, 66" steel. All 25" wide.

kitchen with an **AMERICAN-Standard** sink and cabinet combination



The single bowl, double drain-board American-Standard sink and cabinet combination offers an expanse of work surface with versatile undersink storage. Sizes: 54 x 25", cast iron or steel; 60 x 25", cast iron.

This sink and single drainboard combination in cast iron or steel provides a sanitary work surface; roomy bowl and drainboard may be had on left or right side. Size: 42 x 25", cast iron or steel.

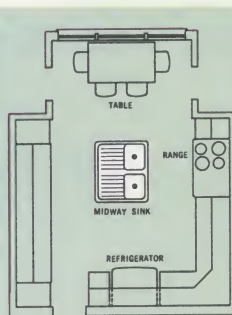
The double compartment sink and cabinet allow the advantages of the double bowl sink in a limited space. The two-door undersink compartment provides ample storage space. Also available with one deep laundry bowl and one shallow bowl. Size: 42 x 25", cast iron.

American-Standard cast iron kitchen sinks are the finest made. To the rugged cast iron, a smooth coating of enamel is fused. Cast iron forms a rigid base for enamel, so chances of chipping are reduced. The enamel is extra-thick—it stays lustrous and easy to clean through countless scrubbings. Choose an American-Standard cast iron sink, and be sure of good service for years and years to come.

select the new
center-of-kitchen sink

The exciting new American-Standard Midway is more than just a new sink. It's actually a new kitchen work center, placed in the middle of the room. It brings cabinets, refrigerator and range within easy reach to save steps, work and time on every kitchen task.

The big roomy Midway has two deep sinks and a drainboard area of more than 800 square inches. The gleaming sink is of rigid cast iron with a fused-on coating of acid-resisting enamel in white or one of five colors. The Midway has the *only* all steel cabinet that opens from front and back to bring bins, drawers, sliding shelves and storage area within easy reach. Exclusive pop-up drains are dial-operated from the cabinet front—no more groping in greasy water. Four appliance outlets permit convenient use of mixer, coffee maker or waffle iron. A faucet of the future is another American-Standard first, one hand turns on hot or cold water . . . or a mixture of both.



choose an

AMERICAN-Standard

counter top sink

A continuous counter top across the length or width of your kitchen is possible with an American-Standard counter top sink. Designed for tight-fitting installation in counter tops, these sinks are outstanding for beauty and durability. A wide range of sizes and models is available in enameled cast iron or steel.

new sinks with built-in
waste receptor

TRIWELL A double compartment cast iron acid-resisting enamel sink with built-in food waste well between bowls. The lift-out, chrome plated strainer basket has a black plastic lid. Faucet spout swings over basket to rinse food waste before disposal. Water drains into a separate sink drain. The Triwell is 36" long, 21" wide and comes in five popular colors in addition to white.

DUWELL A single compartment, cast iron acid-resisting enamel sink with integral drain food waste well at left of bowl. Faucet swings over both sink bowl and basket. The Duwell is 25" long, 21" wide and is available in white or five lovely colors.



Here's the American-Standard single bowl double drainboard sink for counter installation. An acid resisting enameled cast iron sink in white or color, the size: 54 x 21".

Double bowl flat rim sinks provide added kitchen convenience in counter installations. Select from three models, five sizes in cast iron or steel from 32 x 21" to 42 x 21".

A flat rim sink with drainboard provides convenient, sanitary work surface. Drainboard can be on right or left of sink. In cast iron. Size: 42x21"





add

AMERICAN-Standard

all-steel cabinets—

all at once or a step at a time

This could be your modern kitchen. And you can have it now, all at once—or add groups of cabinets, a step at a time. Either way, you can be sure of quality, style and convenience with American-Standard kitchen cabinets.

These cabinets are made of finest steels, treated for rust resistance, uniformly coated with the best enamel and heat cured for a durable, glossy finish. Doors are sound deadened and handles are heavily chrome plated. If the cabinets should become damaged in the future, *only* with American-Standard cabinets can doors, drawerfronts and louvre panels be removed for refinishing without affecting cabinet efficiency. And *only* American-Standard has the convertibility feature, giving you a kitchen tailored to your individual work habits and changing storage needs.

WALL CABINETS

There's an American-Standard wall cabinet for every storage need. Cabinet sizes are 15", 18" and 30" in height, and range from 15" to 42" horizontally along the wall. Shelves adjustable on one inch centers allow proper storage for everything from spice cans to family size cereal boxes. Cabinets for corners and over refrigerator give added storage space. All American-Standard single door cabinets are available for right or left hand opening.

BASE CABINETS

American-Standard offers a complete variety of versatile base cabinets with smooth-sliding drawers and shelves for storing foods, dishes and kitchen utensils. Cabinet sizes range from a width of 15" to the huge 48" storage center. Because sizes and styles are so complete, your kitchen can be custom designed to fit exactly right with facilities to suit your exact storage needs. American-Standard base cabinets are 34½" high and 24½" deep. A 4" toe space makes cabinets easy to work at.

UTILITY CABINETS

Broom cabinet offers storage for brooms, vacuum cleaner and mops. Hangers are installed for dust cloths. Two adjustable shelves in upper compartment. Two doors for easy access.

The linen closet has five shelves adjustable on one inch centers, two doors. Both cabinets 84" high including 4" sub-base, 18" wide and choice of depth—13" or 24½". Doors hinged left or right.





convertibility... an **AMERICAN-Standard** exclusive

The convertibility feature of American-Standard kitchen cabinets makes them the most useful and versatile you can buy. Convertibility means that the position of sliding shelves or drawers may be changed in any under-sink or base cabinet (with the exception of the 27" base cabinet) at any time—even after installation. Each sliding shelf, each shallow or deep concealed drawer can be located at any of four levels. De luxe exposed drawers can replace doors. Wall cabinet shelves are adjustable on one inch centers to provide storage for both large and small items.

A sliding shelf for the mixer and shallow concealed drawer for attachments show one cabinet arrangement. Cabinets may be converted by anyone at any time to suit the individual homemaker's requirements.



A kitchen can be kept modern by adapting cabinets to meet changing storage needs. This convertibility idea provides two 4" deep concealed drawers for towels and dish cloths. Pans and lids are stored in the 9" deep concealed drawer.

A food storage center in one compartment—four concealed drawers or sliding shelves provide storage for 60 No. 2 cans! Even the rear of a sliding shelf is simple to get to—no reaching from a kneeling position.

Here's another idea for converting the compartment of an American-Standard sink or base cabinet. Two 9" deep concealed drawers provide ample storage space for vegetables, pans or large utensils which won't fit in an ordinary drawer.

cabinet accessories

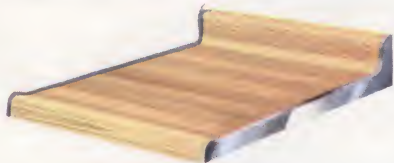
5 beautiful colors

Kitchen decorating is exciting when the scheme includes an American-Standard cast iron sink in any one of these five colors. Colors will not fade nor dull from age, wear or repeated cleaning, and the thick coating of gleaming enamel is acid-resisting—another safeguard to lasting beauty.



tops in kitchen counters

American-Standard counter tops are post formed in five lovely colors of Micarta, the plastic material which stands up to acids, resists heat and cold, is virtually unstainable and won't chip, splinter or corrode. The post formed top is moulded in one piece to include counter surface, back splash and non-drip front edge. The smooth, unbroken surface avoids dirt-collecting cracks and is easy to clean.



maple counter tops

A counter top of hard, thick maple is beautiful and butcher-block tough. Cut meat, bread or vegetables safely and easily—saving knives, platters and composition counter tops. Available in many sizes for straight installation or corner.

WHAT-NOT SHELVES

What-not shelves bring added beauty to the well-designed kitchen. The three highly polished glass shelves are beveled to allow easy removal for cleaning. A perfect place to display plants or china.



SLIDING TOWEL BAR

The double glass rod towel bar keeps towels close at hand, glides in and out with a finger touch. Towels dry quickly. Glass rods prevent rusting and staining, do not absorb odors.



FLOUR, SUGAR OR MEAL BOXES

These two handy storage boxes are designed to fit the sliding shelf of a 15" wide base cabinet. Compact, out-of-the-way and easy to clean, each box holds 18 lbs. of flour.





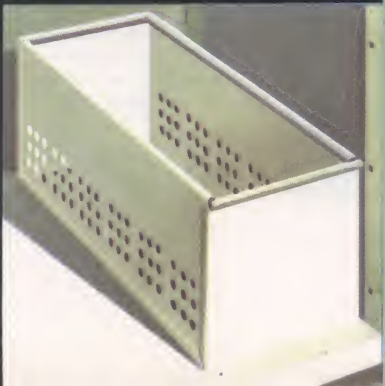
SLICING BOARD

This slicing board of finest quality hardwood saves counter top surfaces, makes bread slicing or vegetable preparation easier. Grooved edges of slicing board slide easily on the drawer edges.



CUTLERY DIVIDER

The cutlery divider provides four roomy compartments lined with easy to clean linoleum. Keeps cutlery neat, reduces scratching and marring. Two sizes, for undersink or base cabinet drawers.



FRUIT OR VEGETABLE BASKET

Here's a basket to keep fruits or vegetables out of the way, yet close at hand. A durable basket with rolled edges for safety, it is perforated for ventilation. Size: 7¼" wide x 7½" high x 21" deep.

quality fittings for good service

A perfect complement to the American-Standard sink in both modern design and lasting service is this new sink fitting. Finished in gleaming, non tarnishing Chromard, this streamlined fitting features a smooth swinging spout, modern practical handles and convenient, out-of-the-way soap dish. Thumb controlled auto-spray rinses entire sink.



The Spring-Flo aerator mixes air with water to eliminate splashing. Suds are created faster for easier cleaning. Water tastes better, too. Offered with most American-Standard sink fittings.

Sink clean-up is no job with an American-Standard crumb cup strainer. Fitting neatly in the drain, the strainer can be raised to let water out while retaining clogging sediment.

for real kitchen convenience

Banish garbage problems forever with an American-Standard Disposer. The Disposer gets rid of food waste as it is produced—before it becomes garbage. This spells the end of garbage in the sink, messy garbage handling, clogged drains and—best of all—there are no trips to the overflowing, vermin collecting garbage can. The Disposer will hold more waste than created in meal preparation and clean-up, and with a flick of the switch, waste is shredded and flushed down the drain in a matter of seconds.

The American-Standard Disposer is constructed of the finest materials for smooth operation and long life—working parts are of rust proof chrome steel. It's safe, too, since the top must be in place before the Disposer will operate.

Completely self cleaning, the Disposer leaves no scraps in the shredding compartment, and the vigorous scouring action of pulverized waste helps keep drain pipes clean.

The American-Standard Aeropel ventilator keeps the air in the kitchen clean and fresh. Odors, smoke and grease are whisked out instantly. Every room in the house stays cleaner and fresh. The Aeropel removes air-borne soot, grease and odors before they can be carried to walls, draperies or furniture.

Winner of two Fine Arts Awards for beauty and utility, the Aeropel ventilator is ideal for the bathroom, laundry or recreation room as well as the kitchen. The smartly styled, moulded plastic grille can be installed vertically or horizontally.

The outside weather door of the Aeropel is open only when the fan is operating. No grease filters to clog, no ducts to collect inflammable grease between walls. Motor is fully protected against overload.

The Aeropel is easily installed, reasonably priced and costs just a few cents a month to operate.



choose

AMERICAN-Standard

for the laundry, too

The Duplex Hostess sink and laundry tray combination has an 8"-deep sink compartment on one side, a 13"-deep laundry tray on the other. A movable enameled drainboard fits either side. The Duplex Hostess is 36" high, 25" wide and 42" long. Comes in white or color. Plenty of storage in the double door undersink cabinet. Wonderful for kitchen-laundries.

The Alden laundry tray is enameled cast iron with double bowl and convenient roll rim. It is 26" wide, 53" long. Height is adjustable from 33" to 36".

The Lakeview is an inexpensive single tub laundry tray easily adaptable to dual installation. It is 24" long, 20" wide and 33" high. American-Standard wall and base cabinets give needed storage space.

enjoy the magic of hot water comfort at its best

with **AMERICAN-Standard** heating equipment



A heating system is supposed to make you comfortable inside your home when it's cold and uncomfortable outside. However, the simple introduction of heat into the house isn't enough. A combination of both radiant and convected warmth must be supplied to keep the heat losses of the human body balanced. The magic of hot water comfort delivers both kinds of heat.

Hot water heating will fill your home with even, constant warmth. It offers maximum flexibility. For only water can be directed where you want it, in any quantity needed, at just the right temperature to maintain comfort. The entire room is living area, with only slight temperature differences between floor and ceiling, inside and outside walls. You have complete freedom of furniture arrangement, because your heating system won't dictate which side of the room you can use.

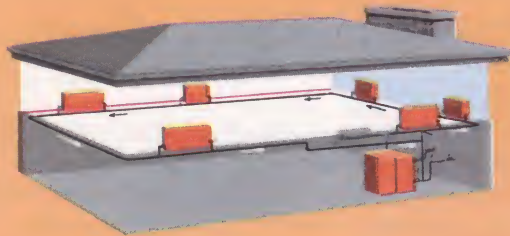
You get clean, gentle heat, too. No dirt comes in through the heating system. Odors and gases cannot be circulated. Low air velocities help to keep draperies and walls clean.

Best of all, you get long range economy when you install hot water heating. Cast iron boilers will outlast other heating plants up to two and one half times. Cast iron is highly resistant to rust and corrosion, and the heat-absorbing surfaces of the boiler are waterbacked, so flame and hot gases cannot distort and destroy these surfaces.

One of the great advantages of modern hot water heating is the variety of modern heat transfer units available—baseboard panels, attractive convectors, compact radiators. Any of them, working in conjunction with a dependable American-Standard boiler, will deliver perfect heating comfort.

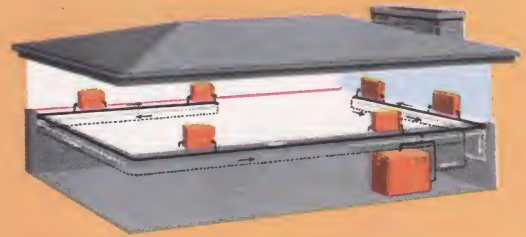
there's a modern hot water heating system for every need

Mainless, or Series Loop, installation using baseboard panels, either non ferrous or cast iron, is an economical form of hot water heating. Here, Heatrim panels replace the baseboard in the amount needed along the outside walls of the house. Where heat is not needed, the enclosure alone may be used to complete the run from wall to wall. Hot water is circulated through the panels by a small circulator mounted at the boiler. Piping drops below the floor to avoid a door or other obstruction.



New Multifin convectors, shown in a one-pipe hot water system, provide inexpensive hot water heating. Room air enters the convectors through an opening at the bottom and passes over the heating element. Heated air re-enters the room through the grille at the top. The enclosure front itself becomes a radiating surface. Installed free-standing, partially or fully recessed, New Multifin convectors may be used with either one and two-pipe hot water or steam systems.

Sunrad radiators are shown here in a two-pipe steam system using low pressure steam. Installed under windows, they counteract infiltrating cold air. Radiators provide radiant warmth; they warm the furniture and wall surfaces without overheating room air. When the thermostat shuts off the heat supply, Sunrad radiators retain heat and compensate for continuing heat loss of the room. They may be installed with either one-pipe and two-pipe hot water or steam systems.



Split Loop Mainless installation applies the economies of the series loop to larger ranch houses and multi-storied buildings. A single supply line leaves the boiler and is split into two or more loops, so that each loop covers one part of the house. This system allows some measure of zoning when balancing cocks are installed in the return side of each loop. Single loop and split loop mainless installations may be used with either Heatrim or Radiantrim panels.



baseboard heating—for warm,
smart rooms next winter

Modern heating equipment can make a delightful difference in the way your home looks next winter—and the way it feels, too. So why put up with old fashioned heating units when you can have smart distinctively styled baseboard panels? Baseboard panels are neat, inconspicuous and they allow complete decorating freedom. They give the economy, dependability and solid comfort of hot water heating.

HEATRIM panels

For uniform floor-to-ceiling warmth in your home all winter long, there's nothing like Heatrim panels. Designed for forced circulation hot water heating, Heatrim panels give prompt response to every heating need. Heatrim panels are ideal for mainless installation, one of the most modern and economical forms of hot water heating. The panels themselves are the main, carrying the hot water from room to room, all around the cold, outside walls of the house. They heat rapidly and cool quickly with a minimum of lag or override of room temperature requirements. Heatrim panels replace the wood baseboard and can be painted to harmonize with any decorating scheme.



RADIANTRIM panels

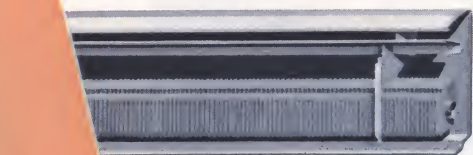
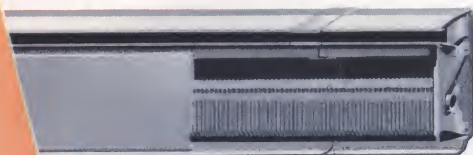
Imagine your house with even, healthful warmth from a source so inconspicuous as to be unnoticeable. That is just one of the benefits of heating with Radiantrim panels. These cast iron baseboard panels represent the most advanced type of radiant heating. Compact, modern Radiantrim panels blanket the cold rim of the room with a wall of warmth, making all of the space liveable. Rooms seem larger—and they actually are, for with Radiantrim panels on the job, furniture can be arranged to best advantage. Sun-like radiant rays warm everything in their path and provide even room temperatures. Radiantrim panels assure better balanced heating, more rapid heating, warmer floors.



Heatrim panels come in convenient 6-foot lengths complete with enclosure backs and tops, heating elements, connecting pieces, and enclosure fronts. Outside and inside corner covers and valve enclosures aid in making a finished installation. Heatrim panels have a one-piece sheet steel back and top, an air vane, and an easily attached sheet steel enclosure front. Each panel is $10\frac{1}{4}$ " high and $2\frac{5}{16}$ " thick. When recessed to the depth of the plaster, it extends into the room only little more than an inch.



Radiantrim panels are furnished in one- and two-foot assemblies with legs at each end, right and left end panels, and a two-foot center section. Outside and inside corners and valve enclosures finish the assembly. Radiantrim panels are cast in one piece of durable cast iron, only 8 inches high and two inches thick. Partially recessed, they extend into the room about an inch. Extension panels are available to complete the run to the wall when necessary.

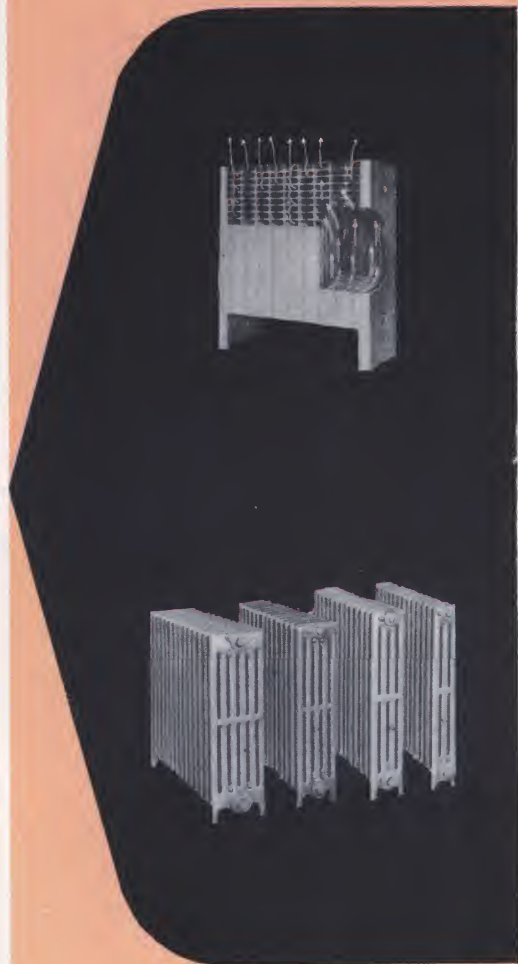


The heating element of Heatrim panels consists of a one-inch copper tube to which aluminum fins have been permanently bonded. A specially designed hanger eliminates expansion problems, noises, and other difficulties. Where no heating element is required, the steel enclosure can complete the run to the wall.



Radiantrim panels are backed by an array of integrally cast fins, to give the advantages of both radiant and convected heat and to give faster response. Radiantrim panels assure maximum transfer of heat with sun-like radiant rays and lower air temperatures.

AMERICAN-Standard offers radiators

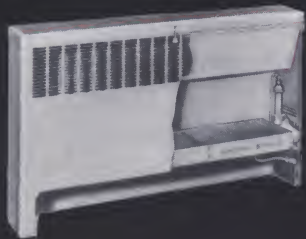


Sunrad radiator offers a perfect balance of radiant and convected heat. The Sunrad is modern and attractive, with a smooth surfaced exterior which can be painted to harmonize with room decorations. It can be installed completely recessed into the wall, partially recessed or free standing. Sunrad radiators are available in two sizes, and in any length required to give the proper amount of radiation.

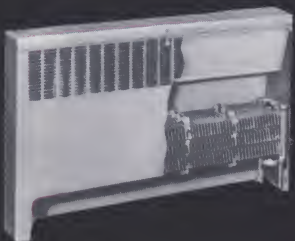
Arco cast iron radiator has slender, graceful design. Available in three, four, five and six tube widths, in four heights, and in any length required to give the proper amount of radiation, this slim-tubed radiator may be installed free standing or recessed.

and convectors for every requirement

New Multifin convector offers low-cost heating. Made of non-ferrous fin and tube construction, the heating element heats up quickly and transfers heat to the circulating air with peak efficiency. Installed free standing, the New Multifin takes up little room. Recessed, it is practically out of the way.



Arco convector combines the advantages of a cast iron heating element in a modern steel cabinet. It provides an abundance of uniform, healthful, convected warmth in any application—whether recessed, partially recessed, or free standing.



boilers for gas firing

The heart of any radiator heating system is the boiler, for within it, fuel is turned into usable heat. The efficient manner in which this job is done makes American-Standard gas boilers outstanding. Every feature has been designed by skilled engineers to take full advantage of all the fuel burned. Gas boilers are constructed of individual pin type sections with tight iron-to-iron joints. Burners are carefully made to assure efficient-fuel burning. Dependable controls permit safe, automatic operation. All gas boilers are attractively jacketed. American-Standard gas boilers comply with national safety requirements, are approved by the American Gas Association, and comply with A.S.M.E. standards.



The EMPIRE boiler is tops in design, performance, and appearance. The beauty of the streamlined Forge Red jacket fits right into kitchen, utility room and basement settings. Wet base construction permits use in basementless houses. The Empire boiler is available in sizes for small to medium size homes.

The STANDARD boiler, for larger installations, provides effective heating surface, precision made burners and automatic controls. Ideal for low-cost, trouble-free operation with all gases. Neat and trim, with a flush type jacket finished in Forge Red, the Standard boiler will give many years of satisfactory service.

boilers for oil firing

If you heat with oil, remember that performance depends a lot on the coordination of boiler and burner. American-Standard oil heating units are fully coordinated. Each unit has its own Arcoflame oil burner. Boiler combustion chambers rapidly transmit the heat and direct it properly. Boilers are durable cast iron with machine ground contact surfaces for tight fit. Finned flue passages extract heat from the flue gases. And you may have year 'round domestic hot water. All American-Standard oil boilers comply with A.S.M.E. standards. Arcoflame burners are listed by Underwriters' Laboratories, Inc., and comply with Commercial Standard CS-75.



The ARCOLINER wet base boiler provides small home owners the advantages of automatic oil heating. In models for hot water or steam, the Arcoliner offers low first cost, economical installation, and dollar-saving heating comfort. Wet base construction permits installation in first floor utility rooms and on combustible flooring.

The OAKMONT boiler assures the finest oil heating for medium size homes. Correctly proportioned combustion space, abundant heating surface and extensive finned flue passages contribute to the efficiency of the Oakmont. The attractive Forge Red jacket conceals the burner and controls. The Oakmont is moderately priced.

The SEVERN (illustrated next page) is available for oil firing with its own version of the Arcoflame oil burner.



boilers for coal firing

Many thousands of home owners have received heating comfort year after year from dependable American-Standard coal fired boilers. Each boiler has ample combustion space for the complete burning of the fuel, effective heat absorbing surfaces for rapid transfer of heat and quick heating of radiators, and numerous other features for fuel-saving operation.

American-Standard coal boilers are designed for either hand or stoker firing. With stoker firing, they offer many of the benefits of automatic heating. Either hand or stoker fired boilers can be used successfully with any hot water or steam heating system. All coal boilers comply with A.S.M.E. standards.



The SEVERN boiler gives top performance with hand or stoker firing. Stoker fired models permit the stoker to operate from the front or either side. Noted for its low fuel consumption and easy care-taking, the Severn is a real provider of heating comfort. The Severn can be converted to oil or gas firing and produce top efficiency with either fuel.

The ARCOLINER dry base boiler, a hand fired boiler for small homes, is a real bargain in heating comfort. Requiring only minimum care and attention, it delivers heat quickly. Proper combustion and maximum indirect heat transfer surfaces reduce fuel consumption. The Arcoliner dry base boiler can be converted to mechanical firing.

The EXBROOK (not illustrated), is designed for larger homes and commercial buildings. For coal firing, the Exbrook is made in stoker fired models only. It is also available for oil firing.

heating controls and accessories for care-free comfort

The comfort your heating system delivers is greatly affected by the controls and accessories with which the system is equipped. One of the biggest pleasures of modern heating is the delivery of comfort without care and attention. At the onset of cold weather, you start the burner, set the thermostat, and then forget about heating until warm weather comes again. This automatic operation is provided by a combination of Detroit controls and accessories. They are responsible for room temperature control, fuel delivery, heat circulation, and safe operation. Shown below are a few of the wide variety of Detroit products. Precision made of the finest materials, they are your assurance of dependable, accurate, safe operation of your heating system at all times.



"Timed cycling" thermostat accurately controls room temperature. "Timed cycling" anticipates heating demands, calling upon the heating system to deliver heat to fit outdoor conditions. Detroit thermostats are available for either manual or automatic night turn-down.

To perform at their best, convectors, radiators or baseboard panels require perfect circulation of hot water or steam. Detroit circulating and air venting valves do the job efficiently. Expertly designed and made of quality materials, they make any home's heating system better.

The controls needed for automatic operation of a particular boiler are determined by the type of fuel used. The combination of Detroit controls and an American-Standard boiler is complete assurance of long, accurate, efficient service. These products provide care-free comfort.

Bi-Flex gas valve provides automatic control of gas to burner on demand of thermostat, under supervision of safety pilot. Stack control offers safe oil burner operation. Relay transformer enables low voltage room thermostat to operate circulator in forced hot water systems.

for year 'round air conditioning —the **REMOTAIRE**

air conditioner

An individual room, remote type unit which provides all weather comfort conditioning for central plant multi-room installations.

The Remotaire uses chilled water piped from a central chilling plant for summer cooling . . . hot water from a central heating plant for winter comfort. In addition, it filters and circulates the air in all seasons.

Individual control of each unit allows the occupant to choose the room temperature that suits him best without affecting adjoining rooms. Designed for location under windows, the Remotaire can be free standing or recessed into wall. Ideal for new building or modernization.



The Remotaire, enclosed in an attractive cabinet of sturdy, reinforced steel, is bonderized and finished with a baked-on cool-tan enamel.



conversion burners



The ARCOFLAME oil burner is engineered for fuel-saving performance with automatic oil heating. The "sunflower" flame gets the utmost heat from fuel consumed. There is a model for most makes of boilers and furnaces. Listed by Underwriters' Laboratories, Inc., and complies with Commercial Standard CS-75.



The STANFLAME conversion burner permits you to enjoy automatic gas heating with your present boiler or furnace. Easily adaptable to almost any type of heating, the Stanflame is easy on fuel, long on heat production. It burns all gases, including liquified petroleum. It requires only a few hours to install.

water heaters



The BUDGET automatic gas water heater is a sturdy, middle-priced water heater noted for its sound design. Quick recovery keeps the storage tank full of hot water, and thermostatic operation guarantees the temperature you need. Controls assure safety. Made in 20, 30, 40 gallon models. When equipped with factory installed anode, has 5-year protection plan.

contact your **AMERICAN-Standard** retailer

Before you build or modernize contact your American-Standard retailer, who *sells, services and installs*. He will be glad to show you quality products in the complete American-Standard line and help you select those that best fit your individual plans and needs. For the name and phone number of your nearest American-Standard retailer look in the yellow pages of your phone directory.

convenient time payment

For modernization, you can enjoy the advantages of quality American-Standard products and arrange convenient monthly payments that best suit your budget. All arrangements are handled confidentially by your American-Standard retailer. There will be no embarrassing credit investigations and no need for co-signers. You can buy now for no money down and three full years to pay.



AMERICAN-Standard sales offices

ATLANTA—717-101 Marietta St., N. W., Atlanta 3, Ga.
BALTIMORE—2315 St. Paul St., Baltimore 18, Md.
BOSTON—515 Park Square Bldg., Boston 16, Mass.
BUFFALO—1807 Elmwood Ave., Buffalo 7, N. Y.
CHICAGO—816 S. Michigan Ave., Chicago 5, Ill.
CINCINNATI—704 Race St., Cincinnati 2, Ohio
CLEVELAND—850 Hanna Bldg., Euclid Ave. & E. 14th St.,
Cleveland 15, O.
DALLAS—512 Cotton Exchange Bldg., Dallas 1, Texas
DENVER—720 U. S. National Bank Bldg.,
817—17th St., Denver, Colo.
DETROIT—Suite 1426, Maccabees Bldg., Detroit 2, Mich.

KANSAS CITY—Suite 503, National Fidelity Life Bldg.,
Kansas City 6, Mo.
LONG ISLAND—Chamber of Commerce Bldg.,
39-01 Main St., Flushing 54, L. I., N. Y.
LOS ANGELES—Suite 672, Occidental Life Bldg.,
Los Angeles 15, Calif.
MILWAUKEE—Suite 1011, Majestic Bldg., Milwaukee 3, Wis.
MINNEAPOLIS—410 Essex Bldg., Minneapolis, Minn.
NEWARK—Suite 206, Industrial Office Bldg., Newark 2, N. J.
NEW ORLEANS—451 The Lee Circle Bldg.,
1040 St. Charles Ave., New Orleans 13, La.
NEW YORK—50 W. 40th St., New York 18, N. Y.
OMAHA—525 Sunderland Bldg.,
403 S. 15th St., Omaha, Neb.

PHILADELPHIA—Broadway-Stevens Bldg.,
Broadway at Stevens St., Camden 3, N. J.
PITTSBURGH—501 Bessemer Bldg., Pittsburgh 22, Pa.
RICHMOND—718 Central National Bank Bldg.,
Richmond 19, Va.
ST. LOUIS—4221 Lindell Blvd., St. Louis 8, Mo.
SALT LAKE CITY—1409 First Security Bank Bldg.,
79 S. Main St., Salt Lake City 1, Utah
SAN FRANCISCO—Suite 708, Sharon Bldg.,
San Francisco 5, Calif.
SEATTLE—816 New World Life Bldg., Seattle 4, Wash.
SILVER SPRING—Eig Bldg., 8641 Colesville Rd.,
Silver Spring, Md.

Digitized by



ASSOCIATION
FOR
PRESERVATION
TECHNOLOGY,
INTERNATIONAL

www.apti.org

BUILDING
TECHNOLOGY
HERITAGE
LIBRARY

<https://archive.org/details/buildingtechnologyheritagelibrary>

From the collection of:

Mike Jackson, FAIA

ATLANTA—717
BALTIMORE—2
BOSTON—515 F
BUFFALO—1807
CHICAGO—816
CINCINNATI—7
CLEVELAND—81
Cleveland 15,
DALLAS—512 C
DENVER—720 U
817—17th St.,
DETROIT—Suite

rd retailer

ur American-
l installs. He
s in the com-
u select those
eds. For the
st American-
of your phone

dvantages of
arrange con-
your budget.
ally by your
e no embar-
or co-signers.
nd three full

ns Bldg.,
en 3, N. J.
g., Pittsburgh 22, Pa.
l Bank Bldg.,

t. Louis 8, Mo.
urity Bank Bldg.,
Utah
iron Bldg.,

ldg., Seattle 4, Wash.
Colesville Rd.,